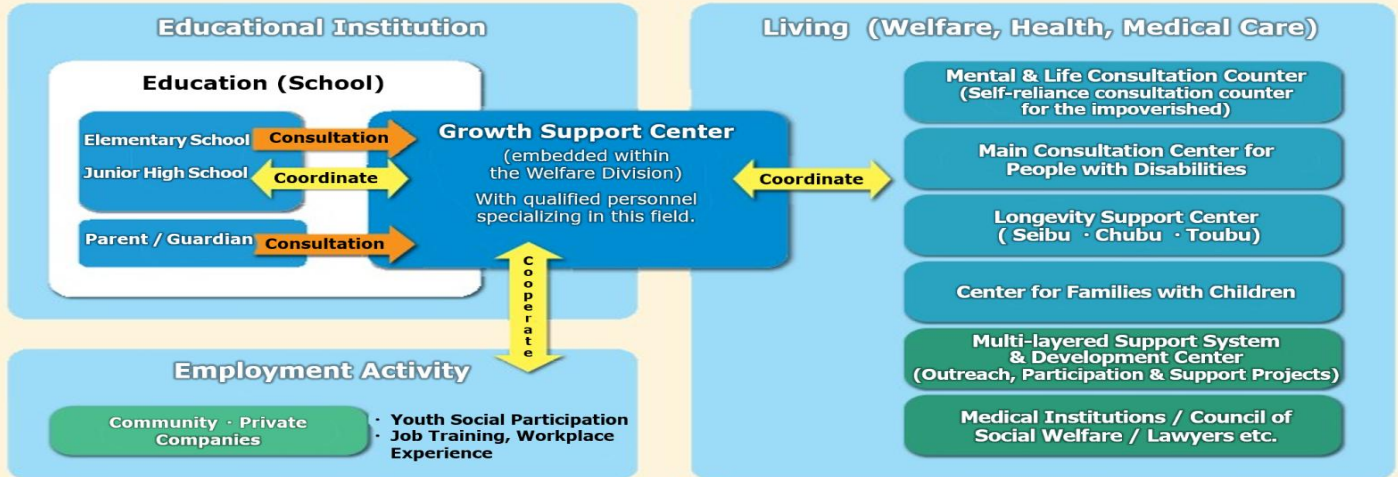


## Growth & Development Support Center Raising Children Together, Creating Connections

発達支援センター つながりをつなぎ、共に育つ

### Growth and Development Support Center (Structure & Function)



For inquiries: ☎ (0574) 25-2111 (Ext.314) Welfare Division

### Fixed-Amount Tax Cut Refund

定額減税に関する給付金（調整給付金）のお知らせ

In line with the FY 2024 Tax Reform, a special fixed-amount of tax refund will be accorded and those qualified will receive a notice. If you are qualified & wish to claim the refund, please make sure to send your application which must reach the Tax Division Office on or before Sep 30, 2024 (Strict Compliance).



For inquiries: ☎ (0574) 25-2111 (Ext. 214)  
Tax Administration Division

### Japanese Class Schedules & MIRAI Learning Support Class

日本語講座と子ども学習支援「Mirai」の案内

#### Study Japanese for FREE !

##### Date and time:

Face-to-Face: Tue & Fri / 3:00pm - 4:00pm

Online class: Tue / 7:00pm - 8:25pm

Place: Eki Minami Bunshitsu

Ota-cho 1752-1 Noritake Bldg. 1F

For inquiries: ☎ (0574) 42-6262

\*To Join & Register



### Children's Vaccinations, Health Checkups & Consultations (Sep)

子どもの予防接種、健診、相談（9月分）

Health Checkups, Lessons & Consultations	Date
4-month old	Sep 6 (Fri) Sep 26 (Thu)
1 year & 6-month old	Sep 19 (Thu)
3-year old	Sep 13 (Fri) Sep 24 (Tue)
Childcare Consultation for 6 to 7-month-old infants	Sep 25 (Wed)
Development Consultation for 9 to 10-month-old infants	Sep 11 (Wed)
Childcare Consultation for 1-year old toddlers	Sep 4 (Wed)
Tooth Brushing Lesson for 2-year old toddlers	Sep 12 (Thu)
Child Behavioral Consultation (Reservation is required)	Sep 11 (Wed)

**Place: Hoken Center (Minokamo Kenko Plaza)**  
Minokamo-shi Kenko no Machi 1-2 ☎ (0574) 25-4145  
**If you need an interpreter for the services above, please call Minokamo City Hall (☎ 0574-25-2111) or Eki Minami Bunshitsu Office (☎ 0574-42-6262)**

### Japanese Communication Course

##### ● Date & time:

Wed 7:00pm - 8:30pm

Place: Shogai Gakushu Center

##### ● Date & time:

Sat 10:00am - 11:30am

Place: Eki Minami Bunshitsu

Ota-cho 1752-1 Noritake Bldg. 1F

For inquiries: **Minokamo Kokusai Kouryu Kyokai (MIEA)**  
☎ (0574) 28-3822

\*Mirai Learning Support Class for foreign students of Elementary & Junior High School in Minokamo City.

### Payment Consultation on a Sunday

日曜納付相談

**Aug 25 (Sun) 9:00am ~ 12:00pm**

Every 4<sup>th</sup> Sunday of the month, Payment Consultation on *Kokumin Kenko Hoken* (National Health Insurance) & *Zeikin* (Municipal Taxes) is available.

**Note:** A Tagalog / English interpreter is available.

**Place:** Minokamo City Hall

# ENGLISH

## Onsai Minokamo 2024 - Nakasendo Festival Looking for Princess Parade Participants

( おん際 MINOKAMO2024 姫道中の参加者を募集します )



Looking for participants to play roles for & join the Princess Parade.

**Date: Oct 20 (Sun)**

**Venue: Ota Nakasendo Vicinity**

Roles	Number of Participants	Qualifications
<b>Koujokazunomiya</b> and other Princesses	4	Maidens (15 to 30 y.o.)
<b>Machimusume</b> (*Girls only*)	3	Anyone (15 y.o. and above)
<b>Kamishimosamurai</b> (Ceremonial Samurai)	12	
<b>Nobakamasamurai</b> (Plain Hakama Samurai)	6	
<b>Hakuchou</b> (White-dressed Attendant)	4	
<b>Otonayakko</b> (Adult Attendant)	16	Children (3rd to 6th grade)
<b>Kodomoyakko</b> (Young Attendant)	10	

(Apply Online to Join)  → until **Aug 30 (Fri)**

**For inquiries:** ☎ (0574) 25-2111 (Ext. 253)  
Commerce, Industry & Tourism Division

## Special Discounts for Minokamo City Residents *Kisogawa Yume Kuukan*

( 木曽川夢空間 美濃加茂市民特別割引のご案内です )

→ **Little World: Museum of Man** (Inuyama)  
**Aug 2 (Fri) to Sep 1 (Sun),**  
except on closing days.



→ **Meijimura Museum** (Inuyama)  
**Aug 13 (Tue) to Sep 8 (Sun),**  
except on closing days.

→ **Nihon Monkey Park** (Inuyama)  
**Aug 19 (Mon) to Aug 30 (Fri),**  
except on Saturdays and Sundays.

**\*\*Bring a proof of I.D.**

(showing Minokamo City residency & age:  
Residence Card, Driver's License,  
Health Insurance Card, etc.)  
when buying tickets to avail  
of the discount.



**\*\*Bring Student I.D. for students.**

**For inquiries:** ☎ (0574) 25-2111 (Ext. 251)  
Commerce, Industry & Tourism Division

## Doctors / Dentists on Duty During Weekends & Holidays

( 休日急患診療当番・休日急患歯科診療当番 )

### Medical Institutions (9:00AM ~ 4:30PM)

Date	Name of Hospital	TEL
<b>Aug 18 (Sun)</b>	<b>Ota Medical Clinic</b>	<b>26-2220</b>
<b>Aug 25 (Sun)</b>	<b>Central Japan Int'l. Medical Center</b>	<b>66-1100</b>
<b>Sep 1 (Sun)</b>	<b>Minokamo Nishi Clinic</b>	<b>28-5310</b>
<b>Sep 8 (Sun)</b>	<b>Central Japan Int'l. Medical Center</b>	<b>66-1100</b>
<b>Sep 15 (Sun)</b>	<b>Gifu Health Management Center</b>	<b>28-8425</b>
<b>Sep 16 (Mon)</b>	<b>Oga Clinic</b>	<b>73-1126</b>
<b>Sep 22 (Sun)</b>	<b>Ota Medical Clinic</b>	<b>26-2220</b>

### Dental Clinics (9:00AM ~ 1:00PM)

Name of Clinic	TEL
<b>Watanabe Dental Clinic</b>	<b>25-2716</b>
<b>Amaike Family Dental Clinic</b>	<b>49-6480</b>
<b>Family Dental Clinic</b>	<b>25-0055</b>
<b>Kamo Dental Clinic</b>	<b>24-4181</b>
<b>Fukuro Dental Clinic</b>	<b>66-2960</b>
<b>Shima Dental Clinic</b>	<b>66-5900</b>
<b>Otomo Dental Clinic</b>	<b>28-0418</b>



※ The dialing code for these facilities is **0574**.

For example: To call Ota Medical Center, dial: **0574-26-2220**.



## Minokamo City Hall Multilingual Facebook Page and Sugumail

( 外国人向けの美濃加茂市役所公式フェイスブック・すぐメール )

Minokamo City Social  
Media Accounts in  
English, Tagalog &  
Portuguese:



### Sugumail Registration

Send a blank mail to:  
**t-minokamo@sg-p.jp**

For questions / opinions:

English



Tagalog



### Minokamo City Newsletter

Edited & published by:  
Minokamo City Hall,  
Community Development Division  
〒505-8606 Minokamo-shi Ota-cho 3431-1



### Consultations in English & Tagalog

TEL: 0574-25-2111  
8:30am - 5:15pm  
(Mon-Fri, except Holidays)